



World Milk Day

June 1

# Dairy in Southeast Asia:

A rapid overview of key trends and some issues

Vinod Ahuja and Steve Staal

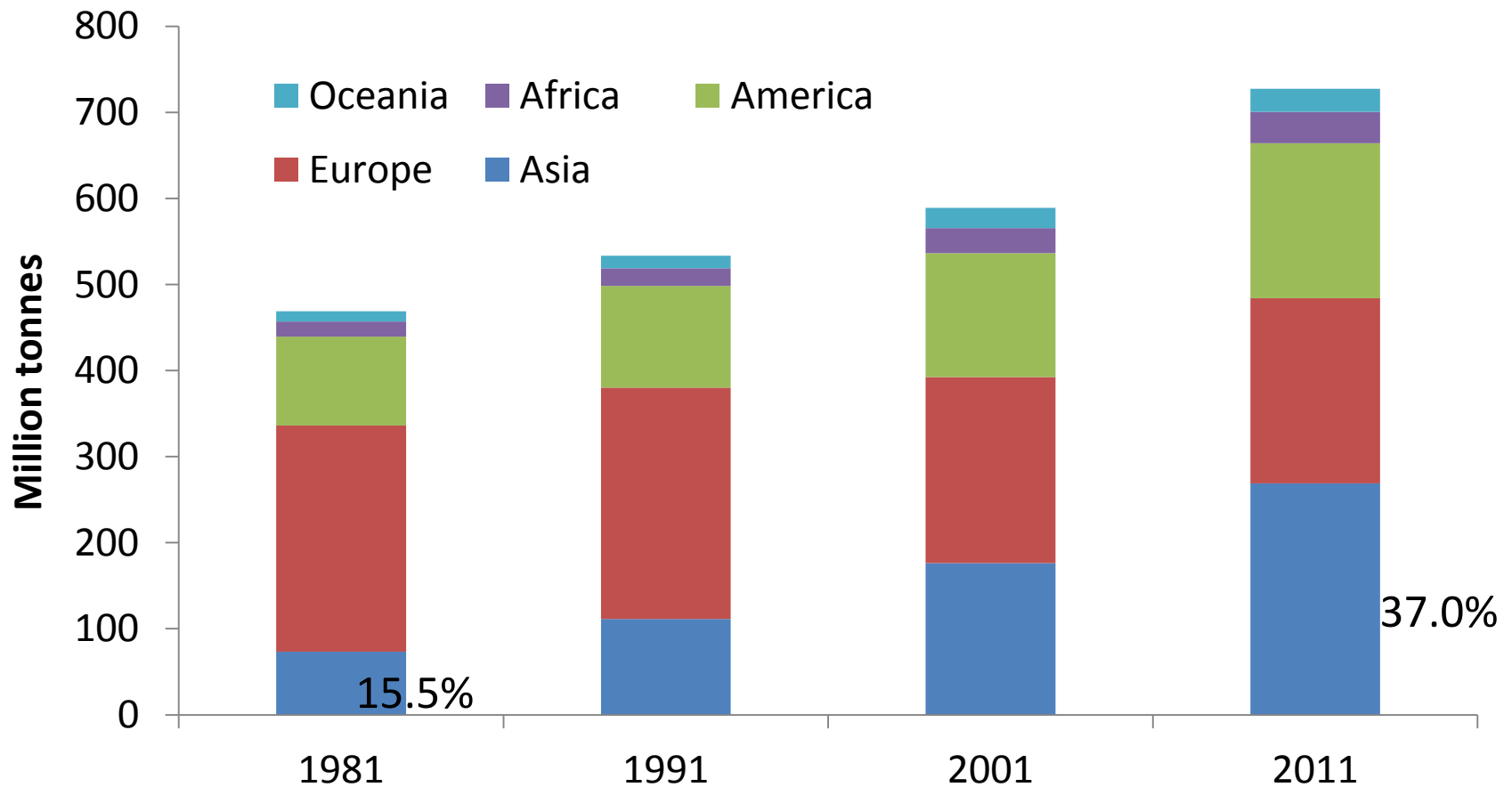
World Milk Day  
June 1, 2013  
Bangkok



# World Milk Day

June 1

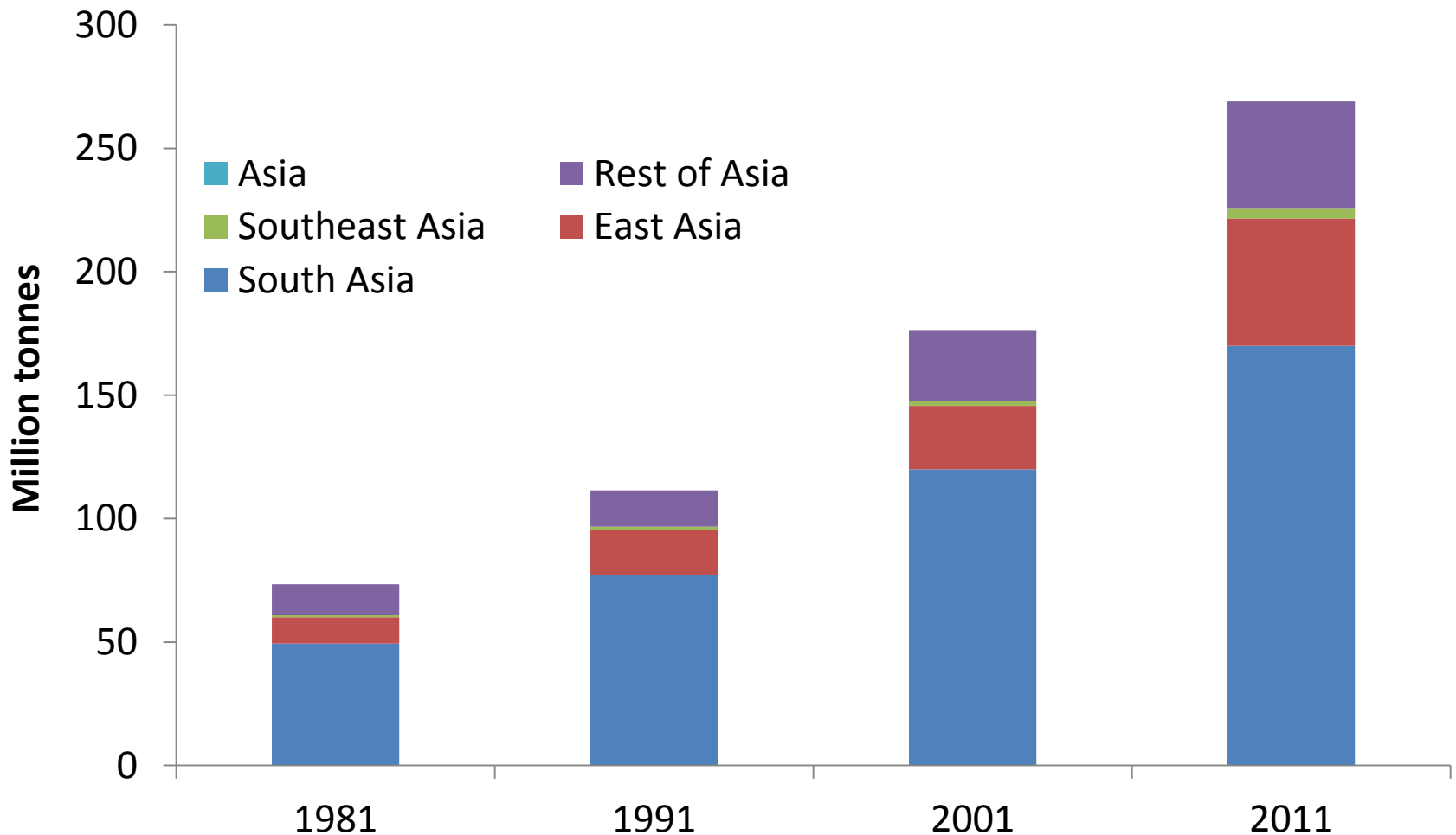
## Growing share of Asia in Milk Production



# World Milk Day

June 1

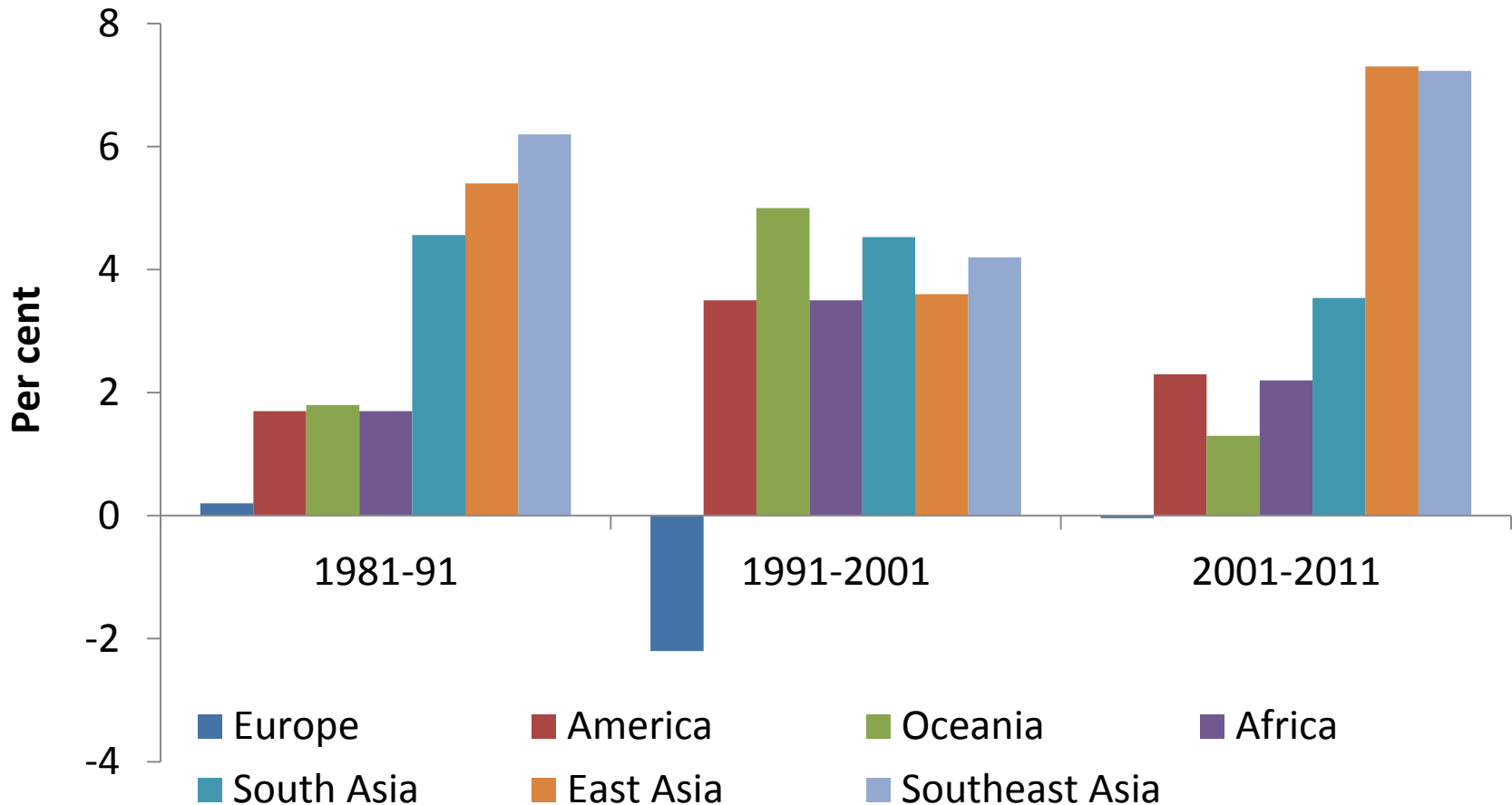
## and changing landscape within Asia



# World Milk Day

June 1

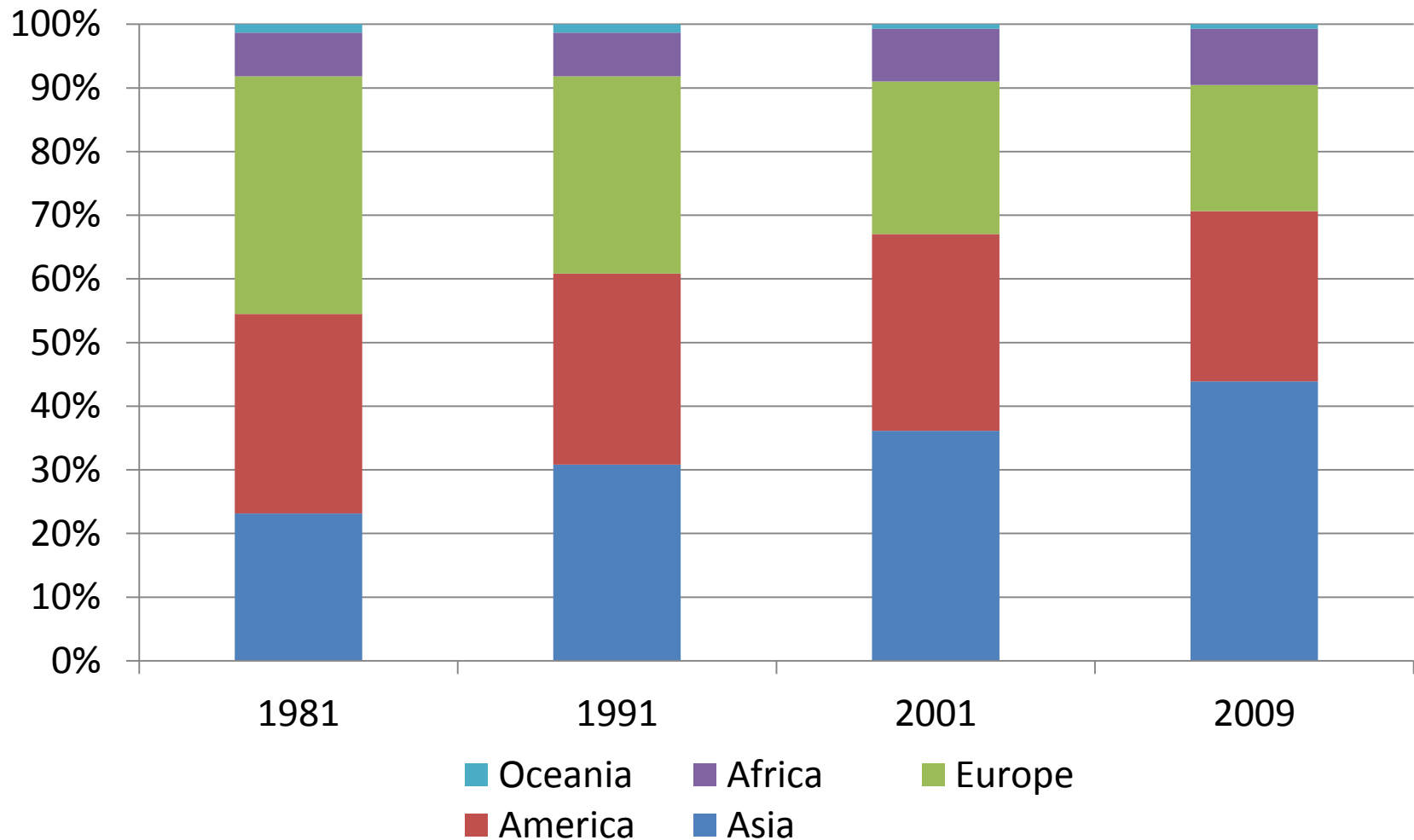
## Annual Growth Rates in production



# World Milk Day

June 1

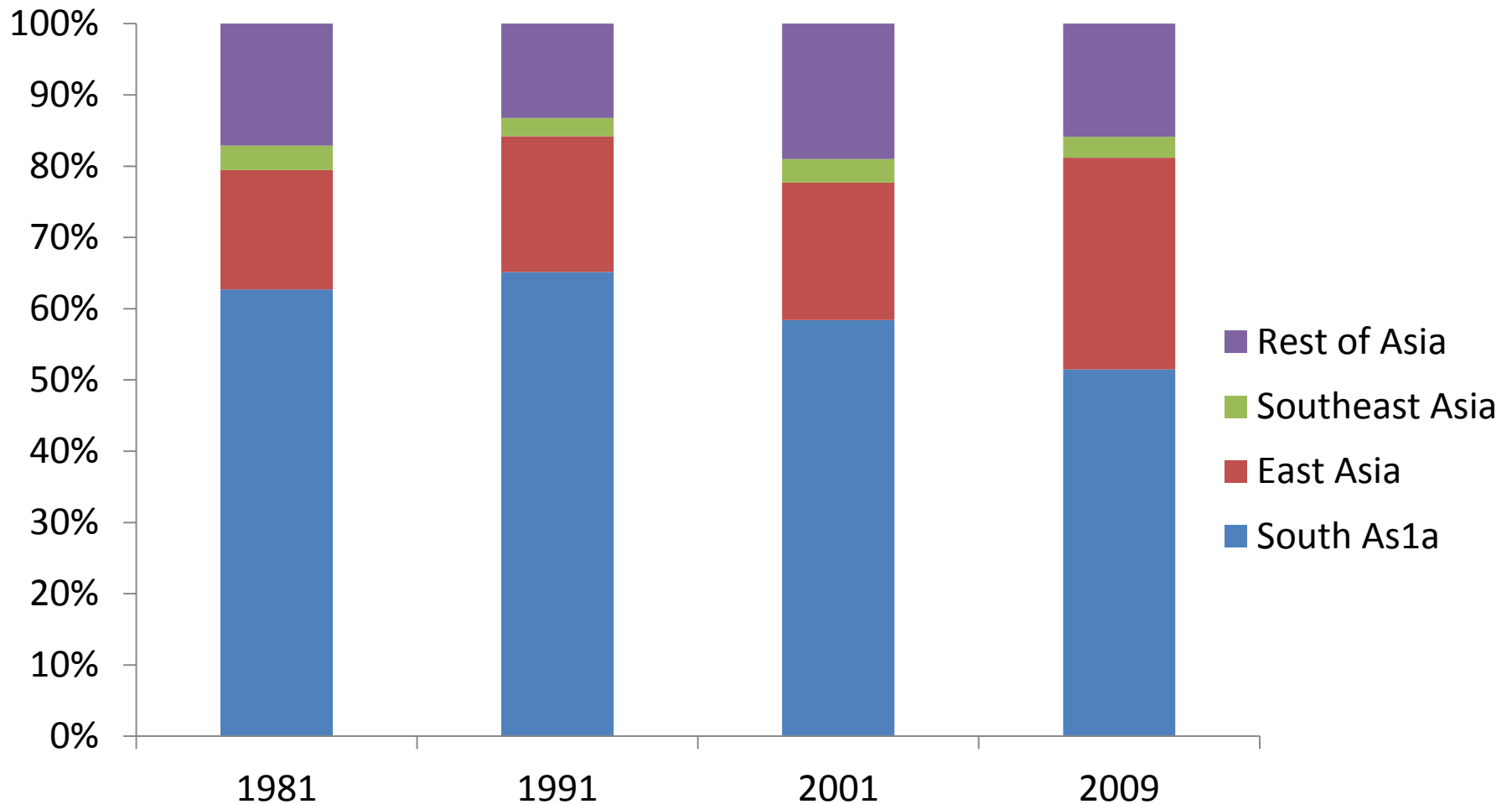
## Regional Shares in total consumption



# World Milk Day

June 1

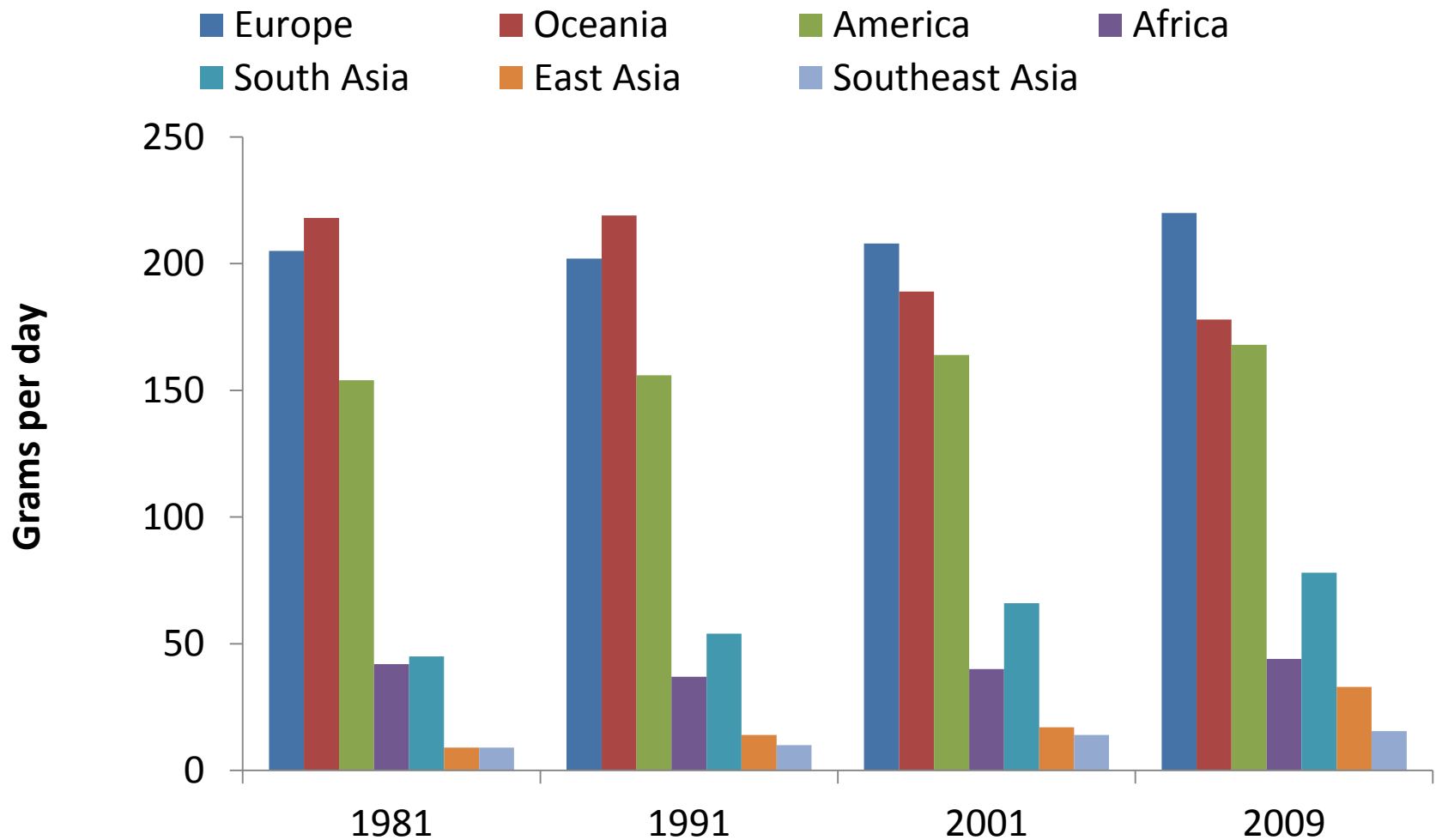
and within Asia . . .



# World Milk Day

June 1

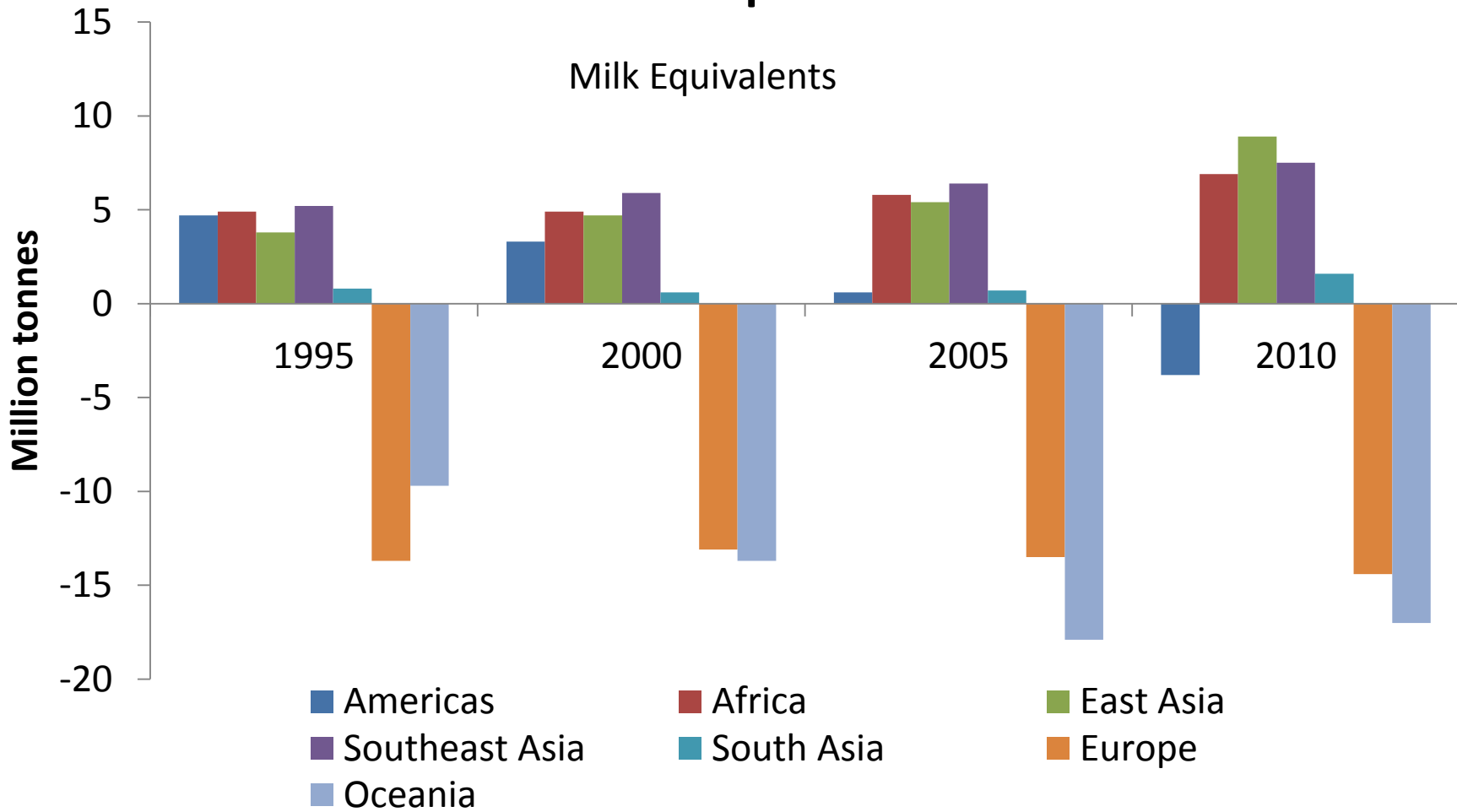
## Per capita milk consumption



# World Milk Day

June 1

## Net Imports

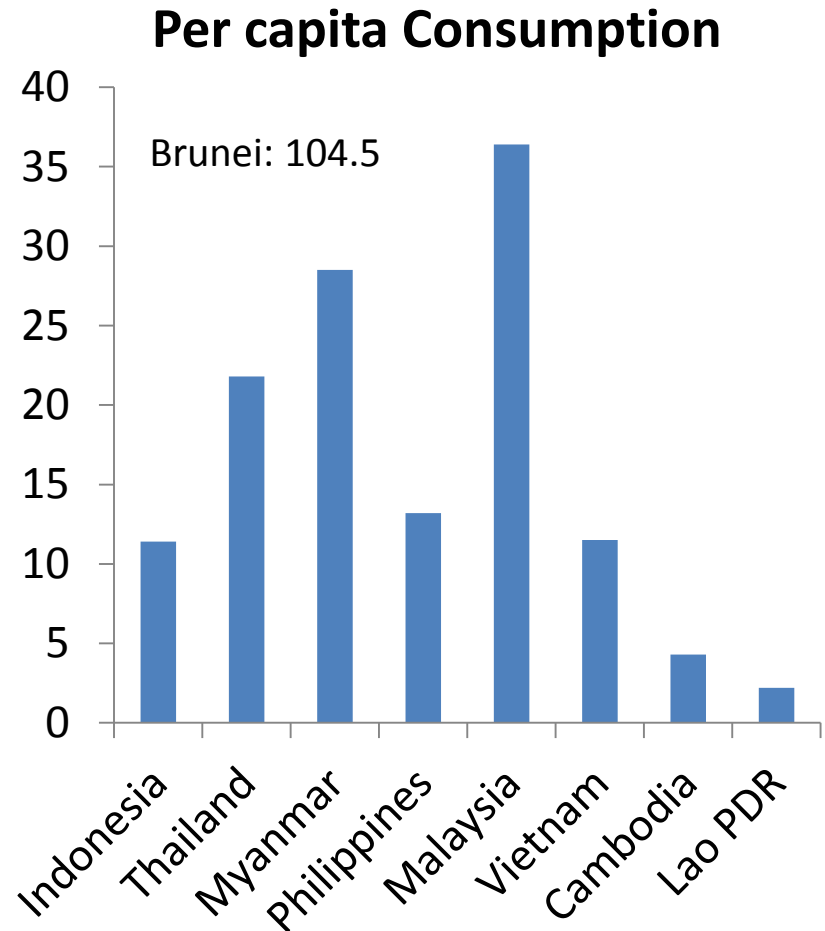
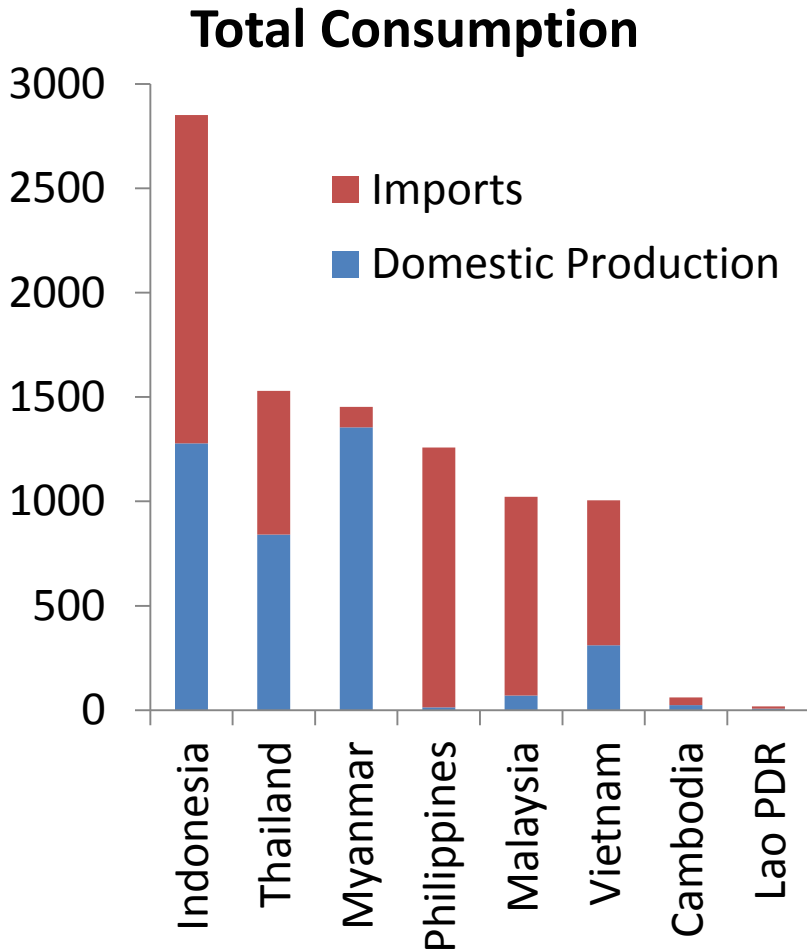




# World Milk Day

June 1

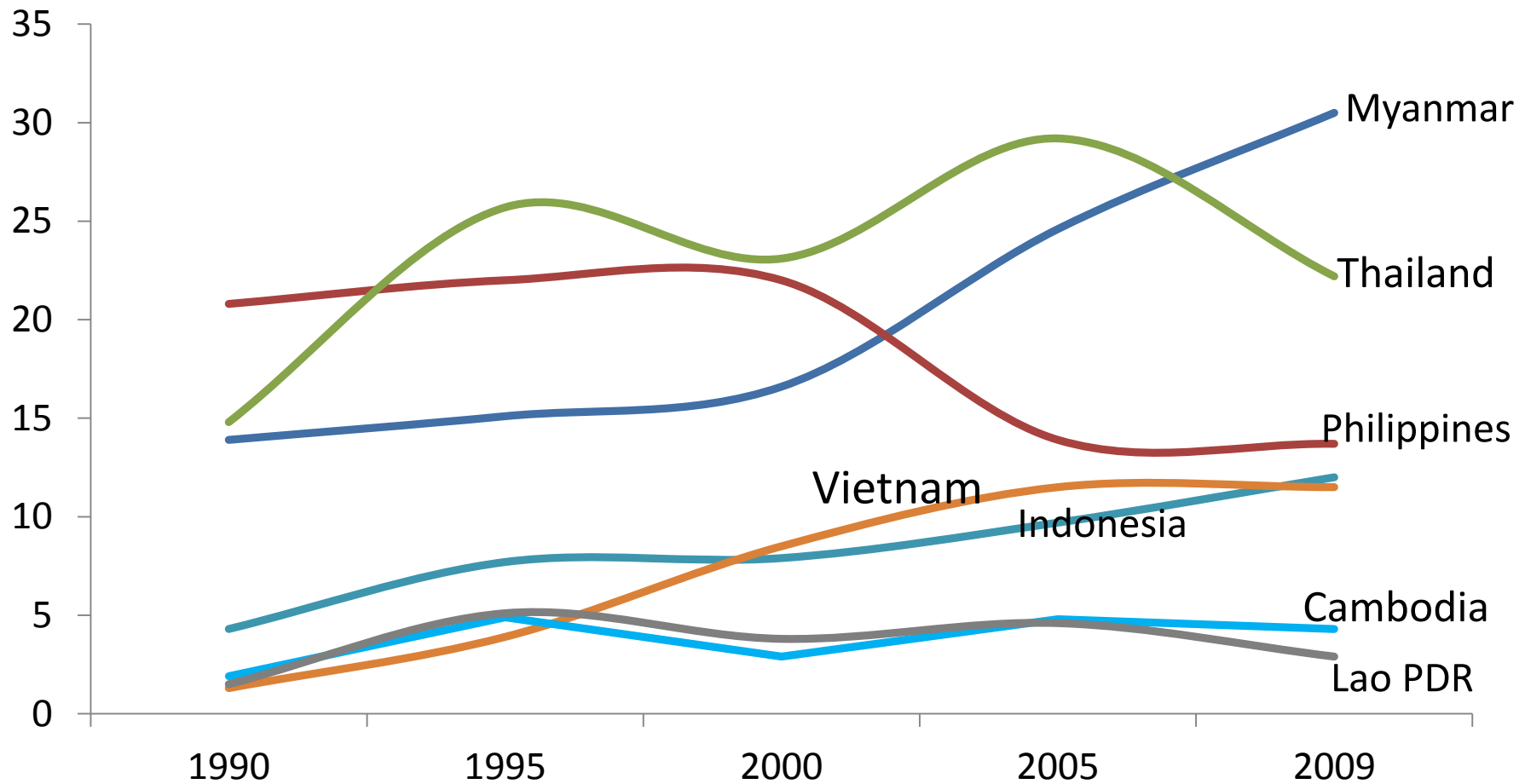
## Within Southeast Asia



# World Milk Day

June 1

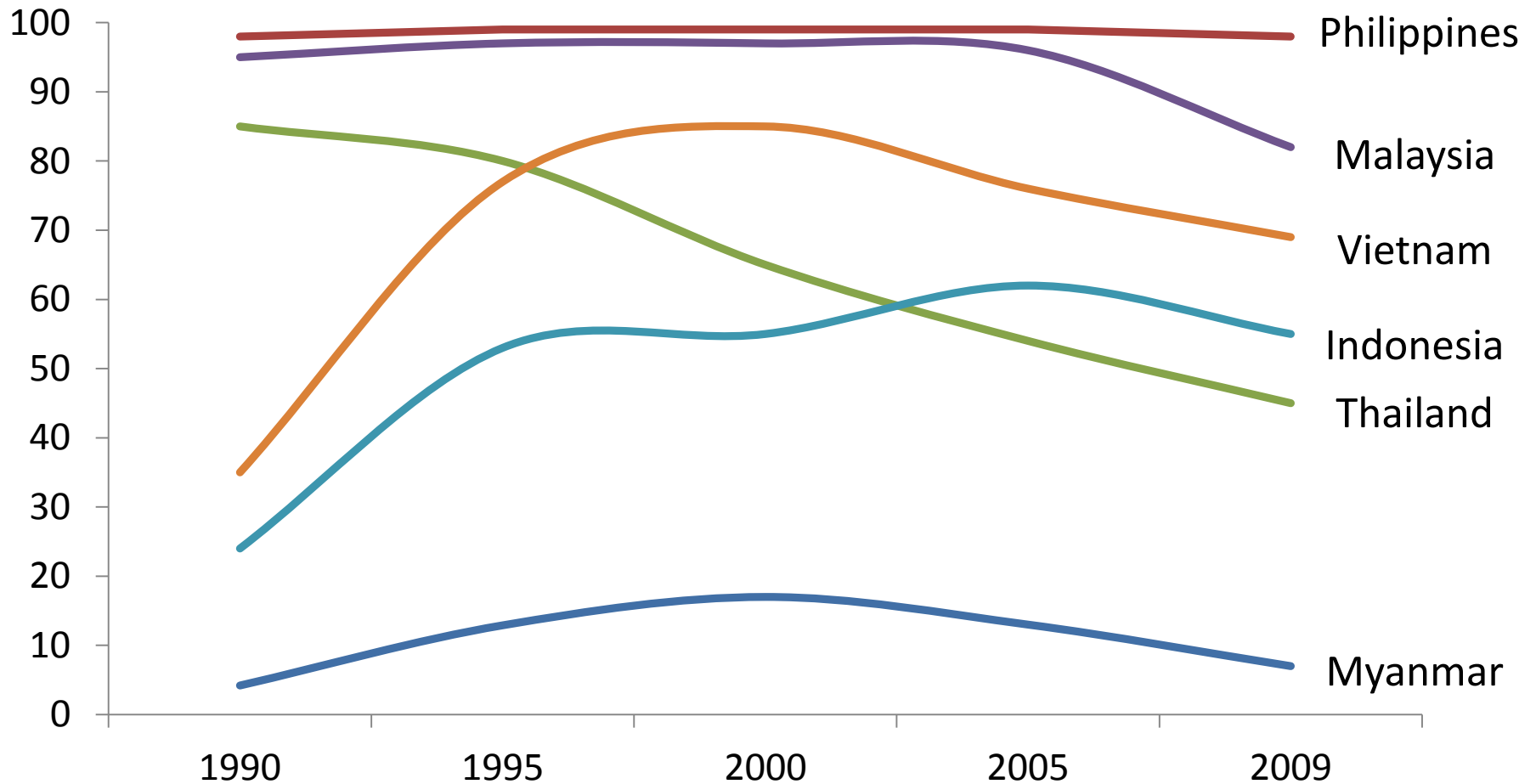
## Per capita consumption (kg/capita/yr)



# World Milk Day

June 1

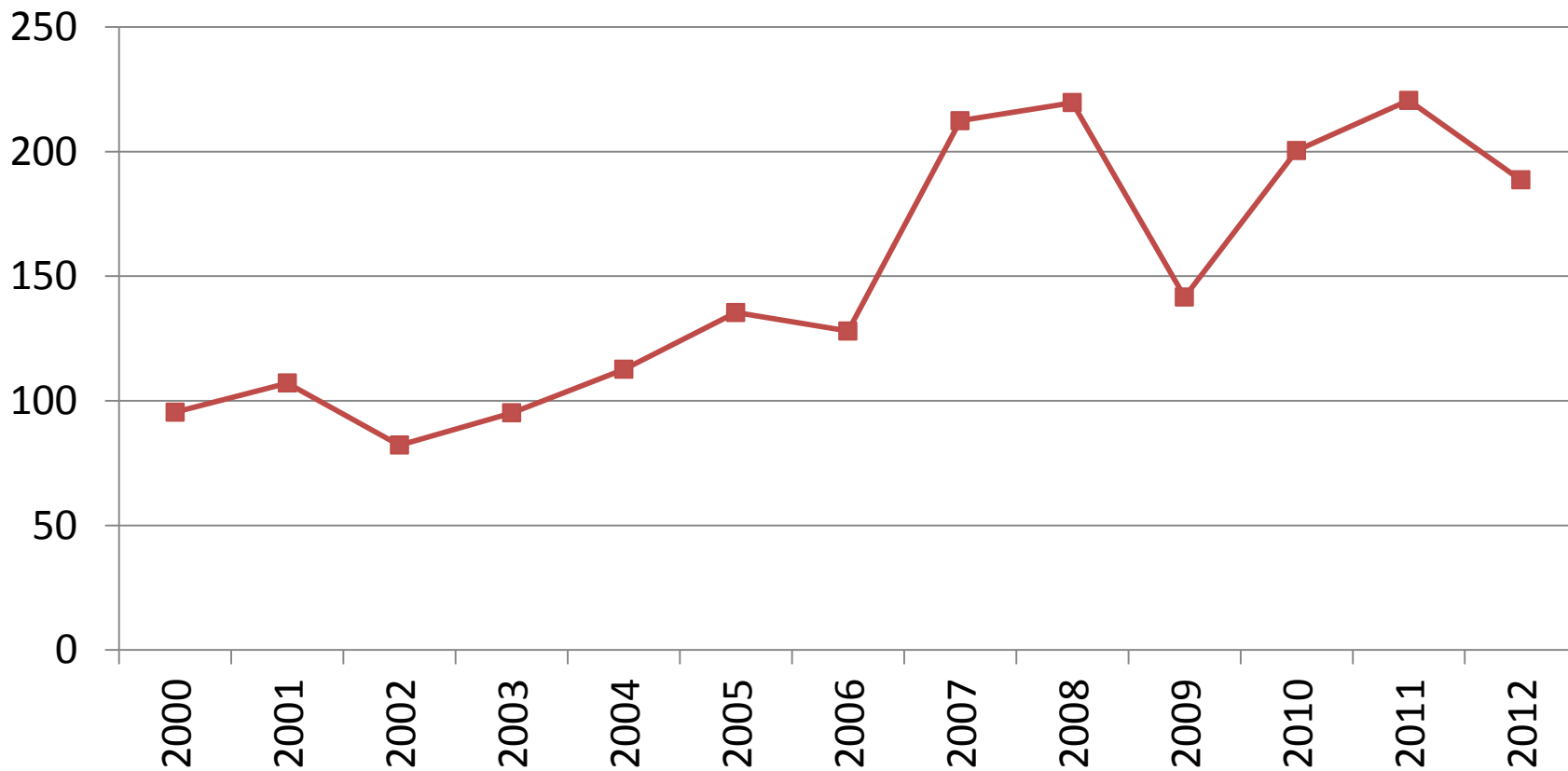
## Changing import shares



# World Milk Day

June 1

## FAO International Dairy Price Index

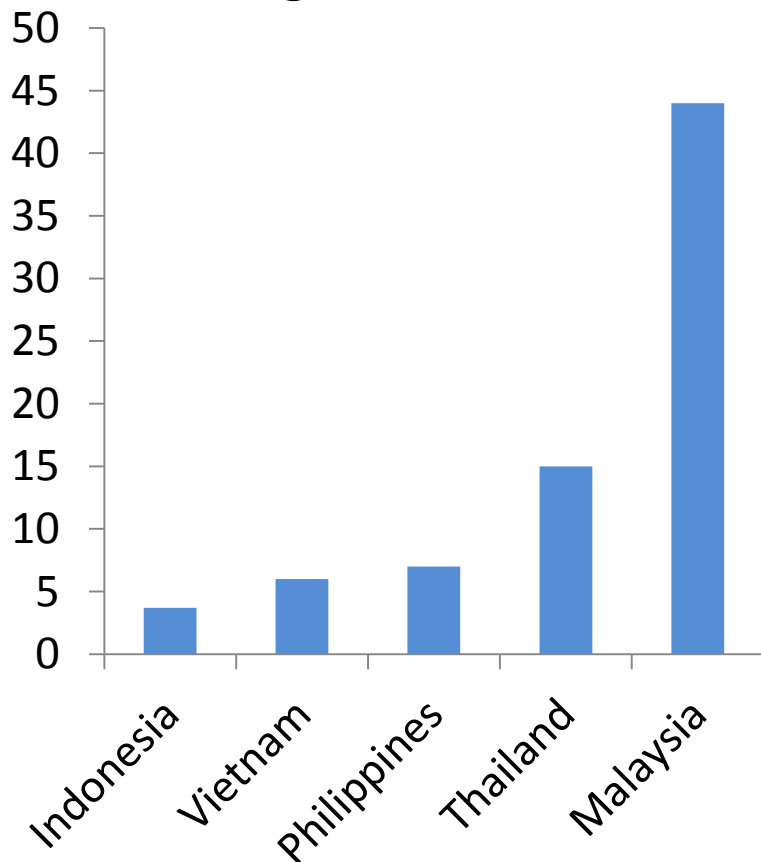


# World Milk Day

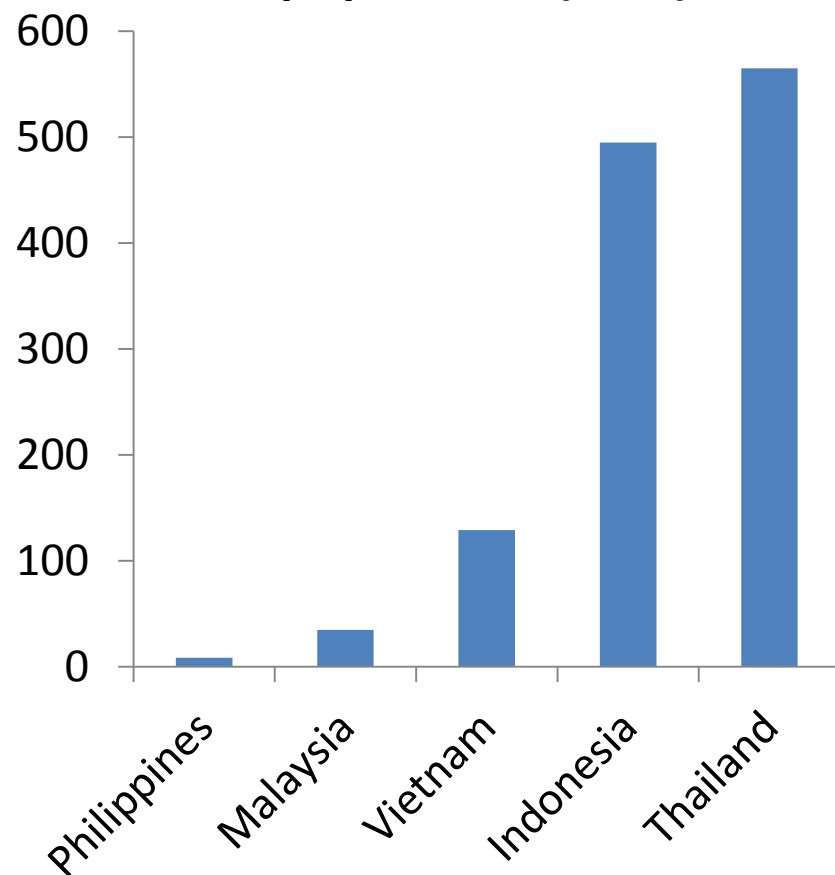
June 1

## Diverse production structures

**Average farm size**



**Cow population ('000)**

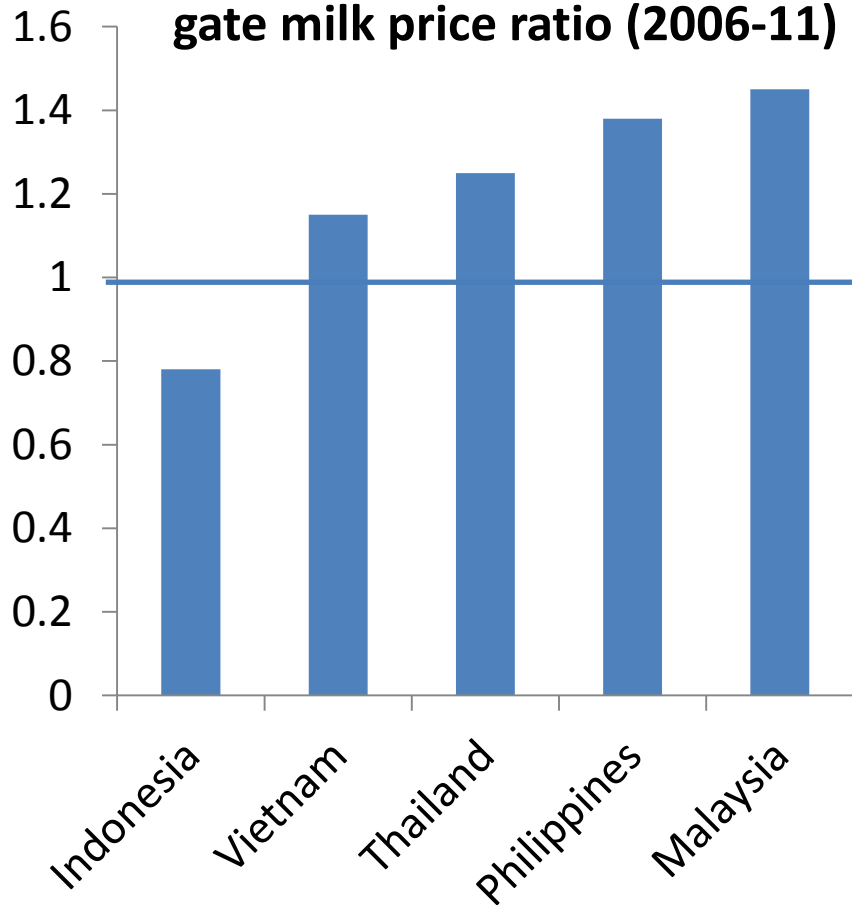


# World Milk Day

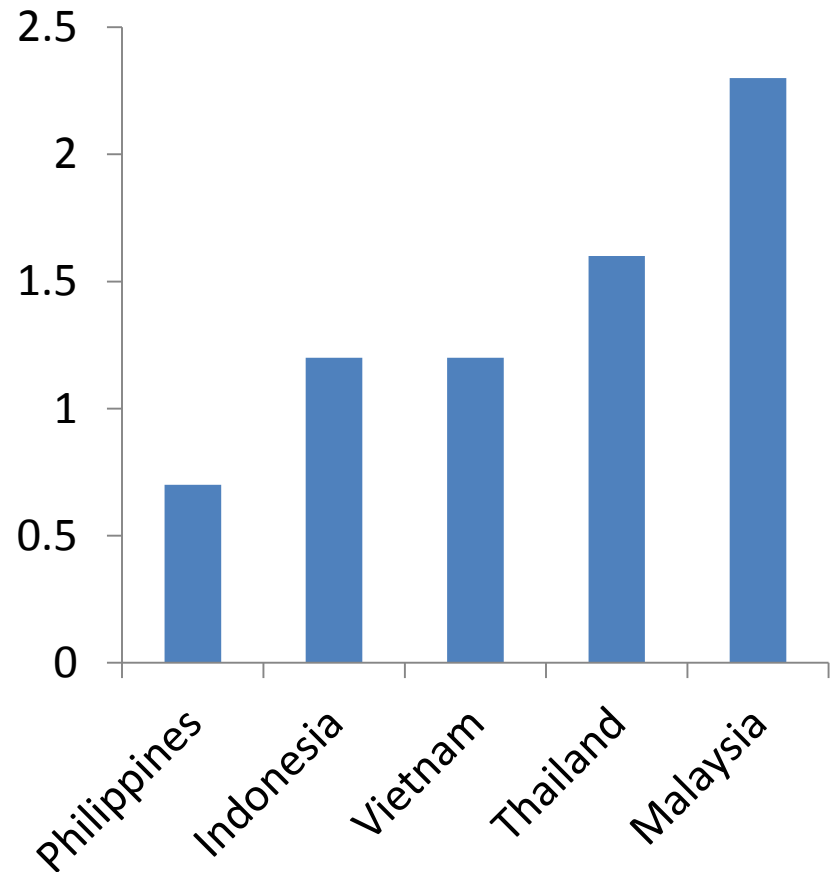
June 1

## and potential profitability indicators

**Domestic-international farm gate milk price ratio (2006-11)**



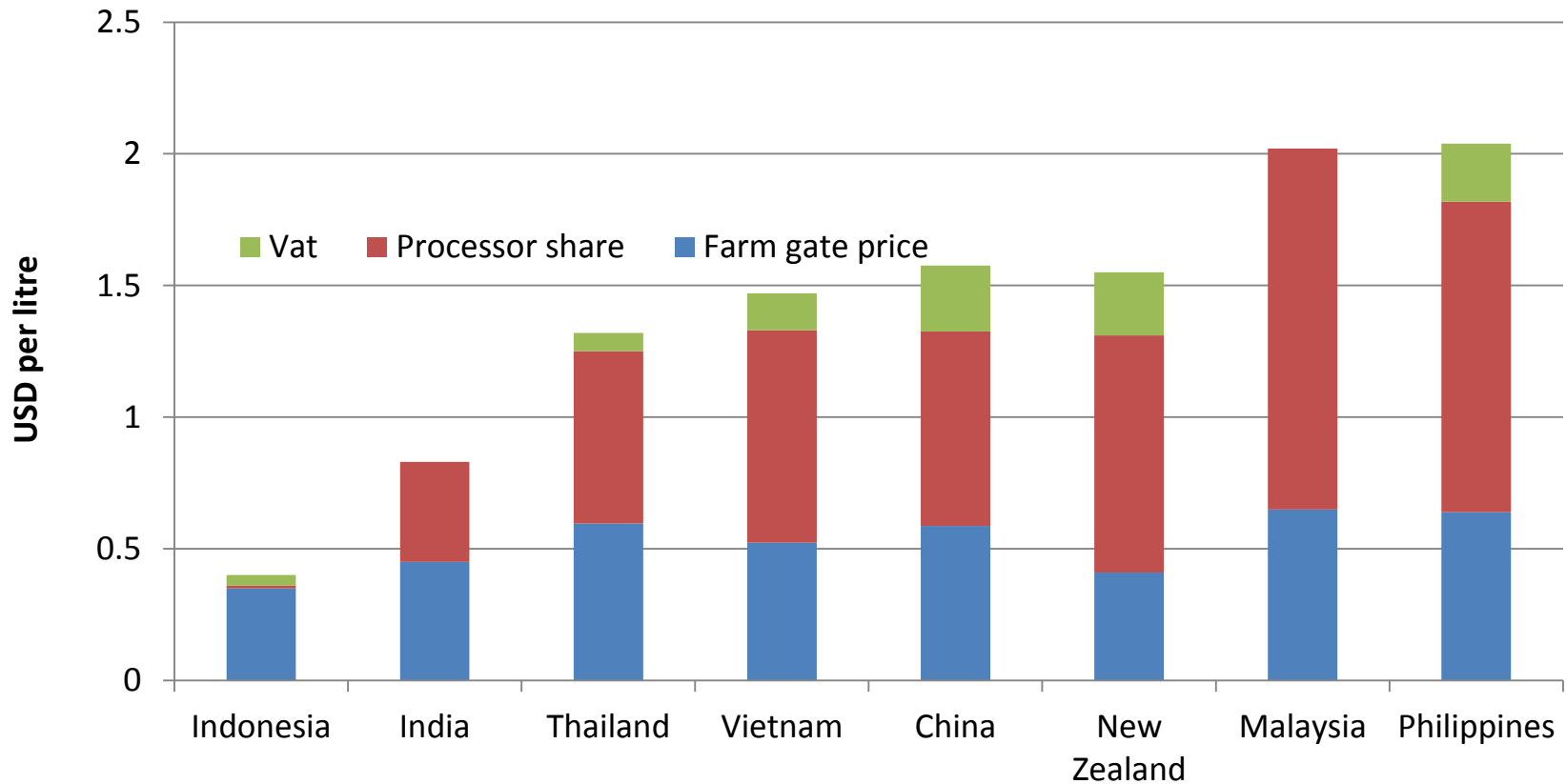
**Milk to feed price ratio**



# World Milk Day

June 1

## Structure of market price



A banner for World Milk Day featuring a blue background with white milk splashes. On the left, a white milk splash is shown with a white straw. The text "World Milk Day" is written in a bold, red, rounded font with a white outline. Below it, "June 1" is written in a smaller, white, sans-serif font.

**World Milk Day**

June 1

Advent of ASEAN Economic  
Community and multitude of FTAs



A blue banner at the top of the slide features a white milk splash on the left side. The text "World Milk Day" is written in a bold, red, rounded font with a white outline, and "June 1" is written in a smaller, white, sans-serif font below it.

**World Milk Day**

June 1

## AEC Pillars

- Single market and production base
- Competitive economic region
- Equitable economic development
- Integration into the global economy.



**World Milk Day**

June 1

## FTAs

- **ASEAN – China Free Trade Area (ACFTA)**
- **ASEAN – Korea Free Trade Area (AKFTA)**
- **ASEAN – Japan Free Trade Area (AJFTA)**
- **ASEAN – India Free Trade Area (AIFTA)**
- **ASEAN - Australia New Zealand Free Trade Area (AANZFTA)**

The image features a blue background with white milk splashes. On the left, a white milk splash is shown with a white milk carton pouring milk into it. The text "World Milk Day" is written in a bold, red, rounded font with a white outline. Below it, the date "June 1" is written in a white, sans-serif font.

# World Milk Day

June 1

## Some questions for consideration

- Growing production and stagnant per capita consumption. Is there a need to stimulate consumption? Why and how?
- Should regional and national policy promote self-sufficiency, or continue to depend significantly on imports under an argument of differential comparative advantage?
- Some countries still maintain trade barriers imports to protect their domestic industries. Can or should these be maintained?
- Smallholder production predominates in many countries, while significant scaling up in others. Should there be a regional position on those trends?

The image features a blue banner at the top with white milk splashes. On the left, a white milk splash is shown with a white straw. The text "World Milk Day" is written in a bold, red, rounded font with a white outline. Below it, "June 1" is written in a white, sans-serif font.

**World Milk Day**

June 1

## Some questions for consideration

- Can AEC contribute to ‘equitable socio-economic development’? What are the potential mechanisms towards realizing that goal?
- What about SMEs in the value chain? Can they comply with non-tariff requirements? SPS, TBT?
- Implications of increasing resource scarcity and increasing price volatility

A blue banner at the top of the page features a white milk splash on the left side. The text "World Milk Day" is written in a bold, red, rounded font with a white outline. Below it, the date "June 1" is written in a smaller, white, sans-serif font. The banner is set against a white background that also shows some milk splashes.

**World Milk Day**

June 1

Thank you